

137 HIGHWAY 202/31 - RARITAN TOWNSHIP NJ - INDUSTRIAL BUILDING FOR SALE



This Raritan township 65,000 SF light industrial building includes a 2,400 SF office. It has been in continuous use and kept in fully code compliant condition by a long-time owner occupant. The brick and steel structure offers an opportunity to be repositioned for multi-tenant, various commercial use including office, showroom, or retail. With approximately 68+ parking spaces.

Property Highlights

- 65,000 SF, Light Industrial Building constructed in 1960
- 2,400 SF -Office Space
- Fully sprinklered
- 5 dock-high tailboards (one at building rear used for dumpster) and 4 overhead drive-in door (10' to 14'). One drive in door leads to lower level.
- Replacement Windows
- Well & Septic/ Natural Gas/ Electric
- Approx. 68 Parking Spaces
- Block 84, Lot 10 - 2021 Taxes: \$43,355.57
- Lot Size: 3.88 Acres
- Ceiling Height: 12'-12.6'

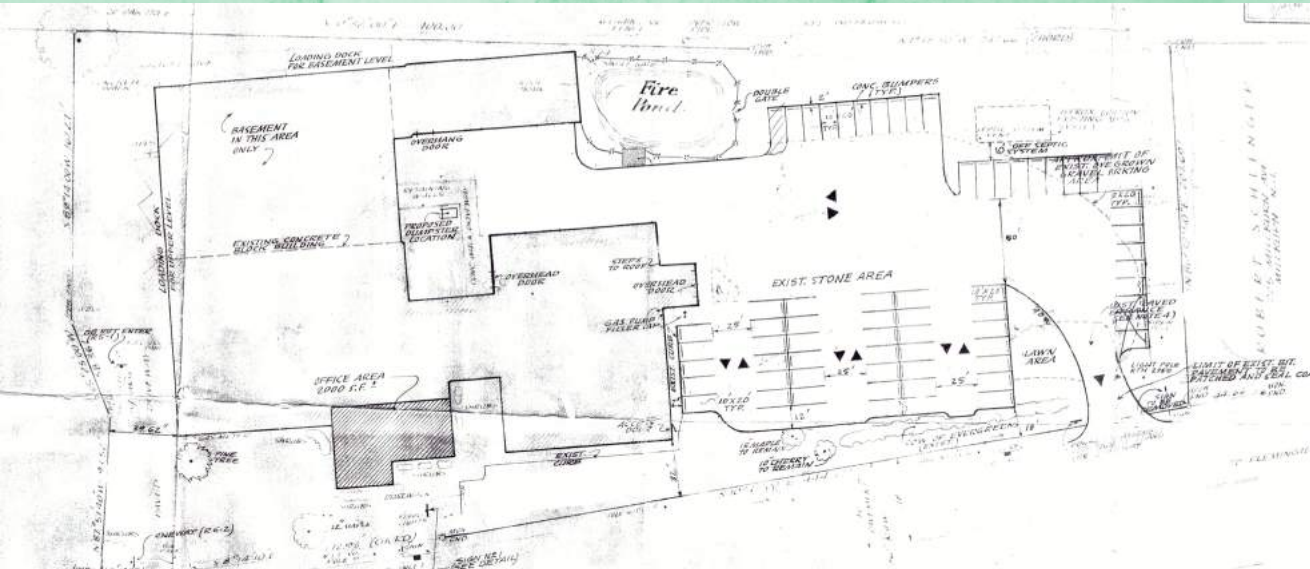
Location Highlights

- 65,000 SF, Industrial & Office Space
- Zoning: B-2- Commercial District
- Traffic Count (2020) 33,332
- Site Access from RT 202/31

FOR INFO CONTACT: MICHAEL BRIEHLER
609-394-7557 X 118
MICHAEL@SEGAL-LABATE.COM
SUBJECT TO CHANGE IN PRICE OR AVAILABILITY WITHOUT NOTICE



An Overview



Rear Warehouse



Property Front

FOR INFO CONTACT: MICHAEL BRIEHLER
609-394-7557 X 118
MICHAEL@SEGAL-LABATE.COM
SUBJECT TO CHANGE IN PRICE OR AVAILABILITY WITHOUT NOTICE

