

883-891 Brunswick Ave.

Trenton, NJ 08638

10,529 SF

STATELY COMMERCIAL BUILDING AT A PRIME INTERSECTION



LOCATION HIGHLIGHTS:

High Visibility CORNER: at the intersection of Brunswick Ave. and N Olden Ave.

ACCESSIBILITY: Steps from NJ Transit buses with connections to downtown Trenton, Trenton Transit Center, area colleges, shopping

Strong Neighborhood Commercial Hub: near Capital Health Regional Medical Center, and Rt. 1, within a dense residential district

TRAFFIC COUNTS: 21,161 - North Olden Ave.
7,318 - Brunswick Avenue

Zoning: C-CC - Corridor Commercial District

FOR SALE OR LEASE

CONTACT:

Anne LaBate

(609) 394-7557 x 114

(609) 947-5812 cell

www.segal-labate.com

anne@segal-labate.com



SEGAL LABATE
COMMERCIAL REAL ESTATE

Subject to errors, omissions, change in price, rental conditions or withdrawal without notice.

883-891 Brunswick Ave.

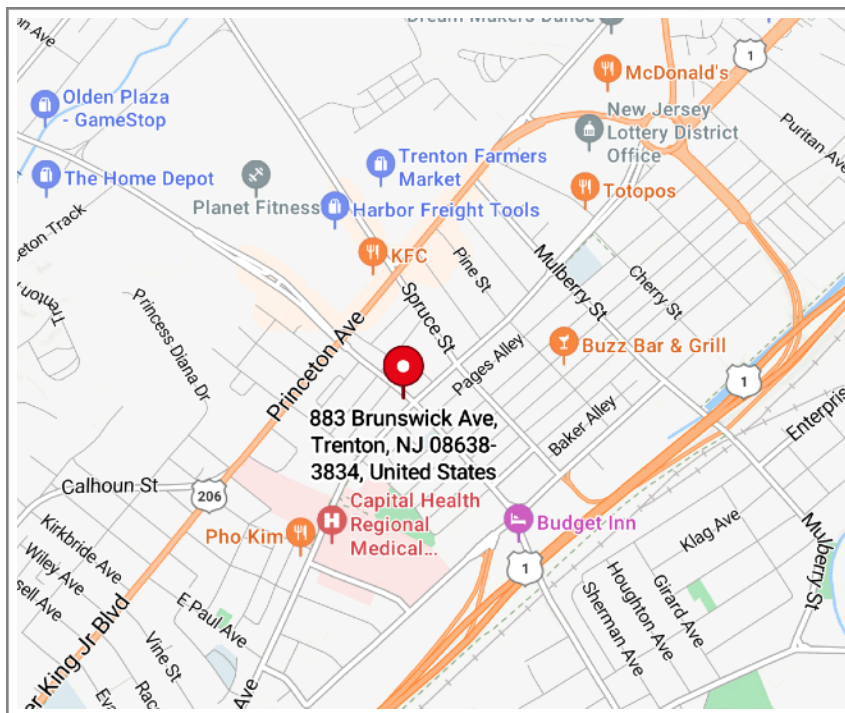
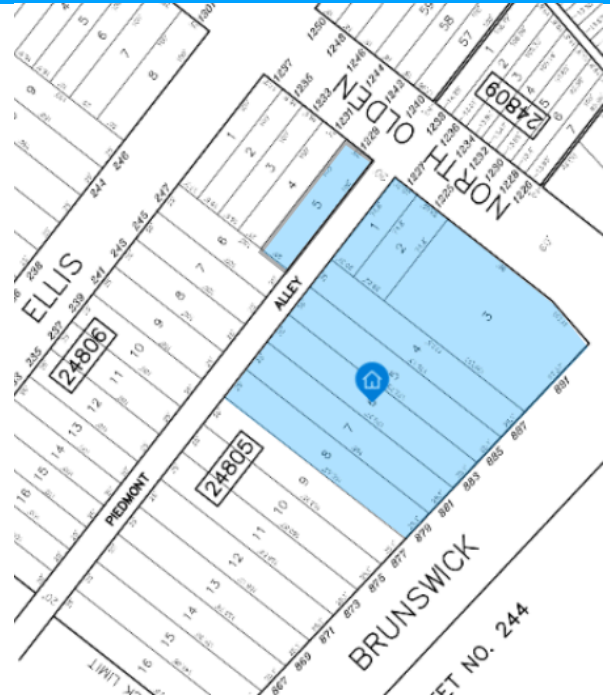
Trenton, NJ 08638

10,529 SF

PROPERTY HIGHLIGHTS:

- **VERSATILE RETAIL SPACE:** Classic grand banking area with high ceiling.
- **First and second floor office space.**
- **Adaptable:** for a mix of uses, including retail, hospitality, office, residential.
- **AMPLE PARKING:** 50+ existing spaces
- **Three Drive-thru service lanes**
- **Street Frontage:** 200' on North Olden Ave, 193' on Brunswick Ave; Total land area is .84 of an acre

Block 24805 Lots 1-8
Block 24806 Lot 5



CONTACT:

Anne LaBate

(609) 394-7557 x 114
(609) 947-5812 - cell

www.segal-labate.com

SEGAL LABATE
COMMERCIAL REAL ESTATE

